

Just For Kix

AT THE MOVIES

EST. *Dance Show* 1981

About to make a scene.

Spring Show Details

Saturday, May 2

Rocori High School Gym

Dancer Arrival Times:

All classes: Arrive 30 minute before dancers show time. Please arrive in costume with hair done (see below) and meet behind the divider.

The groups below are who is in each show and not necessarily in show order. The show program will be out later.

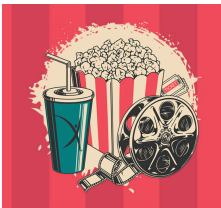
A reminder that Special Session classes perform in both shows.

11:00am show

Dad/Daughter 4yrs-2nd
Sydney Solo
Mom/Daughter Dance
Dance With Me
Wee Hip Hop
Tiny Kix Mon
Wee/Mini Kix
Mini Combo
Wee Petite Mon
Wee Lyrical
Layla Solo
Dad/Daughter 3rd-9th

1:00pm show

Dad/Daughter 4yrs-2nd
Middle Lyrical
Layla Solo
Mom/Daughter Dance
Tiny Kix Tue
Tiny Kix Thu
Mini Hip Hop
Wee Combo
Sydney Solo
Wee Petite Tue
Middle Combo
Wee Petite Thu
Dad/Daughter 3rd-9th



Show Volunteers: We are in need of volunteers to help before each show. Please sign up here: [Click here.](#)



Admission

There is no limit to the number of tickets you are able to purchase. Tickets can be purchased at the link here or at the door on show day (but at higher rate).

[Ticket link here](#)

Pre-sale ticket prices:

\$7 adults, \$5 students under 5 is free, no ticket needed.

Pre-sale ticket ordering deadline is Monday, April 27. After the deadline, you can buy tickets at the door. \$9 adults, \$7 students. Under 5 is free.

Important Notes:

- The show time will default to the first show time. Please be sure to change to 2nd show if needed.
- Siblings in dance DO NOT need a ticket to attend other show times.
- Dance With Me and Partner routine parents DO NOT need a ticket.
- Any spectators that attend both shows due to having multiple dancers or dancers in multiple classes, you DO need to pay for both shows. An option is to volunteer at one show. See link below. Volunteers receive free admission.
- If you need any special seating accommodations, let Amy know.

Actual tickets WILL NOT be passed out for the show. All you need to do is give the last name of the account that they were ordered under when you arrive to the show.

Dance accounts must be up to date in order for your dancer to participate.

Spring Show Special Sessions



[More info/Register here!](#)

Dad/Daughter Dance:

Age 4-2nd grade

Friday's: April 24 & May 1

6:30-7:30pm



[More info/Register here!](#)

Dad/Daughter Dance:

3rd-9th

Friday's: April 24 & May 1

7:30-8:30pm



[More info/Register here!](#)

Mom/Daughter Dance:

K-9

Friday's: April 24 & May 1

5:30-6:30pm

How to style hair for the show



3yrs-1st: Hair curled with sides pulled up and hairpiece added in center.

Dance With Me, No clips were added due to short hair. Hair in pony tail or pull sides up if not long enough.



2nd-12th: slicked, low bun with 2 clips added on dancers right side of bun (opposite of photo) with pointy side up.

Bun tutorial:

<https://www.youtube.com/watch?app=desktop&v=882m4QKu0sg>

Performance Make-up

2nd-12th grade dancers should wear performance makeup for all performances/competitions this season. This includes foundation, blush, black/silver eyeshadow, and red lipstick. The reason for wearing performance makeup is to see their facial expressions. Make up is optional for 1st grade and under.

